



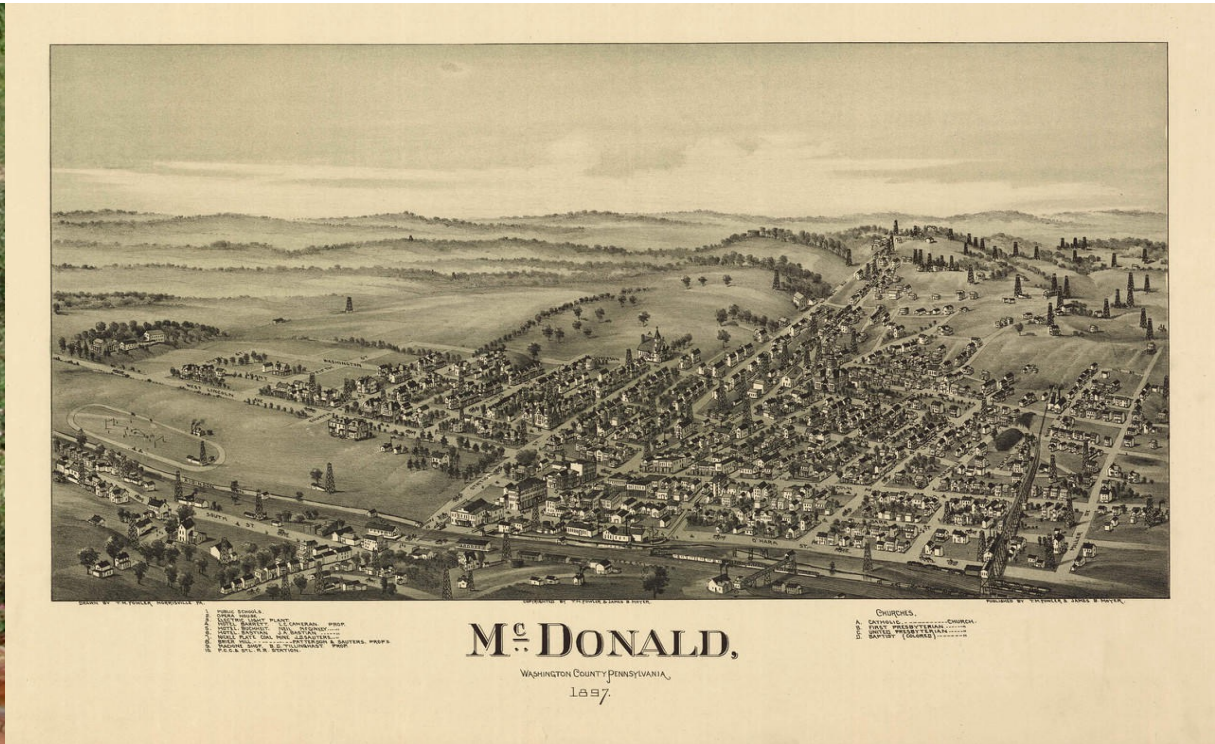
Cancer is Not Our Destiny

The People's Cancer Incidence Screening Tool (PCIST)

A Citizens' Project in Support of Dignity-Based Epidemiology in Pennsylvania

Community Cancer Incidence Report for McDonald Borough, Washington County, PA

Prepared 13-September-2025. Available at: www.pcist.net



People's Cancer Incidence Screening Tool (PCIST)

1

We calculate the average annual crude incidence of 23 different types of cancer over a 20-year (2002-2021) period in a PA town, borough or municipality

2

We compare the local cancer incidence numbers to the national, state and county numbers to identify significant "cancer signals" with elevated rates

3

We take the median age of onset of each type of cancer and compare it with the median age of the town, county, PA and US populations to assess the effect of differences in population age on the cancer rates

4

We investigate and address probable causes of elevated "cancer signals", including heavily polluting industries; infections associated with cancer development; and predatory marketing of addictive toxins to vulnerable EJ communities

Cancer	U.S. Median Age of Onset
Brain and Nervous	61
Breast (F only)	62
Cervical	50
Colon and rectal	66
Esophageal	68
Hodgkin's Lymphoma	39 (bimodal, 20 and 55+)
Kidney and renal	65
Laryngeal	66
Leukemia	65-74, varies by type
Liver and bile	62 (liver) and 70 (bile)
Lung and bronchial	71
Melanoma (skin)	(skin, 66)
Myeloma	60
Non-Hodgkin's lymphoma	67
Oral and pharyngeal	64
Ovarian	63
Pancreatic	70
Prostate	66
Stomach	68
Testicular	33
Thyroid	51
Uterine	60
Urinary and bladder	73

Cancer Rates Vary By Age

The U.S. national, PA state, PA county, and municipal/township/borough cancer incidence rates used in PCIST are crude rates. We derive these by taking the total number of invasive cancer cases that occurred in a specific population (<20 yrs, <30 yrs, adults 20+, and All ages — total, females & males) in relation to the total number of people in that specific segment of the population. This produces a value that represents the amount of cancer in a community relative to its relevant population size. These values are then compared to generate incidence ratios. In our community reports, we flag municipal “cancer signals” with a percentage rate equal to or more than 10% higher than the US, PA and County numbers.

It is important to note that most cancer rates increase with age. To help interpret the effect of a population's age distribution on its crude incidence rates, the following is provided:

- 1) A reference table (at left) with the median age of onset of each type of cancer in the U.S. as per the American Cancer Society
- 2) The relevant median population age for each municipality/ township/borough, the county, PA state, and the US nation
- 3) A chart that shows the precise population age distribution in 5-year increments, derived from the 2010 US Census figures that are used in PCIST's 20-year calculations

When analyzing cancer signals, it is important to note that (with the exception of Hodgkin's lymphoma and testicular cancer) a younger population's crude cancer incidence rates will be under-represented when compared with an older population.

PCIST uses publicly available data sources from the American Cancer Society; the PA Cancer Registry via the PA Department of Health; the CDC SEER and WONDER databases; and the U.S. Census' American Community Survey. None of these providing institutions are responsible for PCIST calculations, interpretations and reports.

Please visit www.pcist.net or contact PCIST@pm.me for a detailed explanation of the PCIST project and more information about the People's Cancer Incidence Screening Tool.

MORE Air & Water Pollution: OUR CONTEXT for RISING CANCER

In the community of McDonald Borough, residents have faced **elevated cancer rates for at least the past 20 years.**

WHY? CUMULATIVE IMPACTS

McDonald Borough is located in the most heavily fracked county in Pennsylvania, which is itself part of a large and growing **environmental justice zone** above the Marcellus Shale. Since 2004, thousands of oil and gas wells have been **hydraulically fractured**. Many residents now live within a few miles of dozens of active wells and multiple compressor stations. Energy companies often abandon unplugged oil and gas wells and contaminate drinking water sources with **fracking wastewater** – a toxic slurry of “industry secret” chemicals, radioactive particulate matter such as radium, and PFAS “forever chemicals”.

Residents also face significant legacy and contemporary pollution due to the long history of bituminous **coal mining** in southwestern Pennsylvania. In 2005, the Nickel Plate Mine in McDonald Borough experienced a mine blowout, releasing 8,000-10,000 gallons of contaminated water per minute and flooding homes and businesses. Intensive agriculture with **chemical pesticides and herbicides** widely contaminates residents’ soil and water supplies. A network of state and inter-state highways, including the I-70 and I-79, brings a steady flow of trucks and **diesel emissions** into Washington County. The heavy pollution from all of these activities compounds and travels, producing **significant cumulative impacts** on residents’ health.

Additionally, McDonald Borough residents require adequate medical screenings and treatments for **infections that can contribute to cancer**, such as HPV (cervical cancer), EBV (Hodgkin’s lymphoma), Hepatitis B and C (liver cancer), H. pylori (stomach cancer), and HIV (many cancers). In pursuit of profit, companies also sell already vulnerable residents **addictive products** that contain carcinogenic substances, such as tobacco and alcohol.

TOTAL CANCER IN MCDONALD

During **2002-2021 (20 years)**, the average annual crude cancer incidence rate among all ages of the population of **McDonald Borough** is greater than the corresponding rate for the **US; PA; & Washington County** by:

All Age Cancer in McDonald	> US	> PA	> WashCo
Colon and Rectal	149%	103%	71%
Oral and Pharyngeal	129%	110%	63%
Non-Hodgkin’s Lymphoma	77%	47%	32%
Kidney and Renal	65%	47%	28%
Pancreatic	60%	30%	26%
Lung and Bronchial	56%	29%	7%
Urinary Bladder	54%	14%	-4%
Thyroid	53%	8%	2%
Esophageal	40%	10%	-5%
Melanoma	10%	2%	21%

2010 Median Population Age:

McDonald Borough’s population (44.8) is **slightly older than** the US (36.9), PA (39.8) & WashCO (43.0).

✦ Please visit www.pcist.net or contact PCIST@pm.me for more information about the People’s Cancer Incidence Screening Tool

FEMALE CANCER IN MCDONALD

During **2002-2021 (20 years)**, the average annual crude cancer incidence rate among females of all ages in **McDonald Borough** is greater than the corresponding rate for the **US; PA; & Washington County** by:

All Age Female Cancer- McDonald	> US	> PA	> WashCo
Oral and Pharyngeal	306%	259%	163%
Uterine	190%	111%	91%
Urinary Bladder	181%	103%	74%
Colon and Rectal	179%	124%	93%
Non-Hodgkin's Lymphoma	168%	119%	92%
Ovarian	129%	93%	71%
Lung and Bronchial	91%	58%	33%
Thyroid	58%	13%	9%
Myeloma	54%	39%	34%
Pancreatic	49%	21%	19%
Breast	23%	10%	1%
Kidney and Renal	15%	2%	-16%

2010 Median Female Age: The total female McDonald Borough population (46.3) is **older than** the US (38.1), PA (41.2) & WashCo (44.4)

MALE CANCER IN MCDONALD

During **2002-2021 (20 years)**, the average annual crude cancer incidence rate among males of all ages in **McDonald Borough** is greater than the corresponding rate for the **US; PA; & Washington County** by:

All Age Male Cancer- McDonald	> US	> PA	> WashCo
Colon and Rectal	121%	84%	51%
Kidney and Renal	91%	69%	53%
Esophageal	72%	35%	15%
Pancreatic	68%	37%	31%
Oral and Pharyngeal	57%	47%	15%
Thyroid	45%	3%	-10%
Melanoma	27%	19%	42%
Lung and Bronchial	26%	4%	-14%
Brain and Nervous System	24%	7%	3%
Urinary Bladder	12%	-17%	-31%

2010 Median Male Age: The total male McDonald Borough population (42.4) is **comparable to** the US (35.6); PA (38.3) & WashCo (41.7)

◆ Please visit www.pcist.net or contact PCIST@pm.me for more information about the People's Cancer Incidence Screening Tool

CANCER IN MCDONALD

PEDIATRIC CANCER

During **2002-2021 (20 years)**, the average annual crude cancer incidence rate among **children aged 0-19 years** in **McDonald Borough** is greater than the corresponding rate for the **US; PA; & Washington County** by:

Pediatric Cancer- McDonald 0-19 years of age	> US	> PA	> WashCo
Thyroid	1240%	905%	894%

YOUTH CANCER

During **2002-2021 (20 years)**, the average annual crude cancer incidence rate among **youth aged 0-29 years** in **McDonald Borough** is greater than the corresponding rate for the **US; PA; & Washington County** by:

Youth Cancer- McDonald 0-29 years of age	> US	> PA	> WashCo
Thyroid	586%	392%	415%

◆ McDonald Borough is located in the most heavily fracked county in Pennsylvania, which is itself part of a large and growing **environmental justice zone** above the Marcellus Shale.

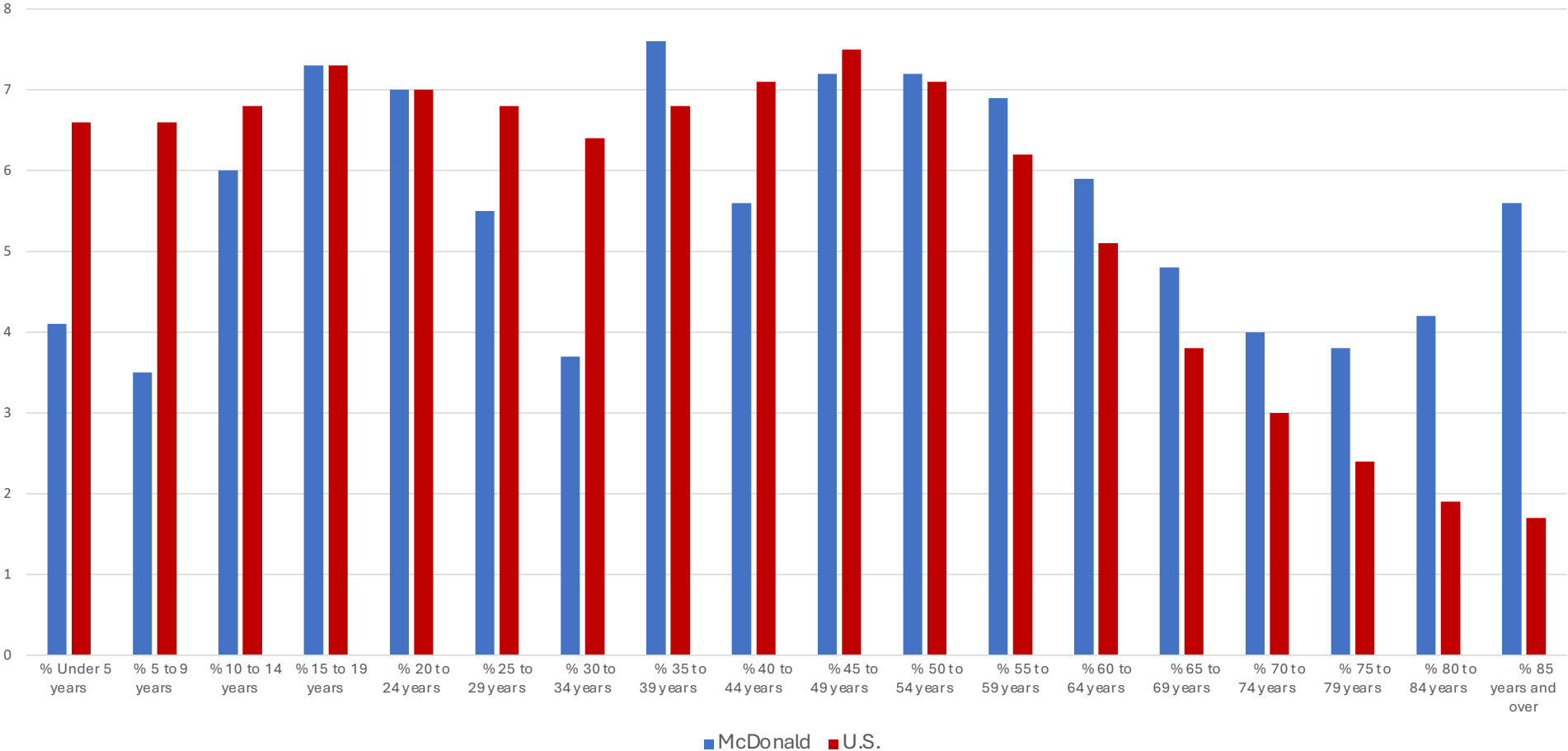
◆ Please visit www.pcist.net or contact PCIST@pm.me for more information about the People's Cancer Incidence Screening Tool

ADULT CANCER

During **2002-2021 (20 years)**, the average annual crude cancer incidence rate among **adults aged 20+** in **McDonald Borough** is greater than the corresponding rate for the **US; PA; & Washington County** by:

Adult Cancer in McDonald 20+ years of age	>U S	> PA	> WashCO
Uterine	183%	105%	94%
Colon and Rectal	132%	93%	65%
Ovarian	125%	94%	74%
Oral and Pharyngeal	115%	101%	58%
Non-Hodgkin's Lymphoma	67%	43%	29%
Kidney and Renal	56%	42%	25%
Pancreatic	49%	23%	22%
Urinary Bladder	43%	8%	-7%
Lung and Bronchial	32%	12%	-6%
Esophageal	31%	4%	-8%
Thyroid	27%	-8%	-13%
Breast	20%	9%	2%

2010 McDonald Total Population Age Distribution



PCIST's TIPS to Help Protect Our Families

1. RUN AIR PURIFIERS IN OUR HOMES. These machines **remove toxic particles** so that we don't inhale them into our lungs. This helps to prevent both cancer and asthma. The best ones have an **activated carbon filter** that also removes VOCs (volatile organic compounds). An air purifier handles a set amount of space, so we may need more than one (or to move the one we have when we go to bed). Found on Amazon and Walmart, Lowes, and Home Depot.

DID YOU KNOW? We can inexpensively build our own air purifier with a box fan and furnace filters. Google "How to make a Corsi-Rosenthal box" for directions. Try to use MERV activated carbon filters, which are available on Amazon and at Lowes and Home Depot.

2. REPLACE GAS STOVES WITH ELECTRIC ONES. Natural gas and propane stoves release invisible, odorless and toxic gases (including radon, benzene, nitrogen dioxide and methane) into our homes. These gases affect air quality throughout our homes, including in the bedrooms, and are known to cause asthma and cancer. It is much safer to cook with an electric stove.

3. USE A WATER FILTER, ESPECIALLY IN THE KITCHEN. These filters **remove harmful particles and toxic chemicals from our drinking and cooking water**. Some come as a pitcher that we fill with water from the tap, while others attach directly to the faucet. The **best filters also remove PFAS/PFOS – forever chemicals – which are known to be in the fracking waste that often contaminates drinking water sources**. Found on Amazon and in a wide range of department and home supply stores.

4. AVOID ADDITIONAL FACTORS that put addictive toxins in our bodies and increase cancer risk, such as **smoking**; breathing **second-hand smoke**; and **drinking alcohol**. Some **infections also contribute to causing cancer** such as **HPV** (cervical cancer), **EBV** (Hodgkin's lymphoma), **Hepatitis B and C** (liver cancer), **H. pylori** (stomach cancer), and **HIV** (many cancers). If you were exposed or have symptoms, ask a doctor for **testing and proper treatment**. All girls and women can also **get vaccinated against HPV** between the ages of 9 and 45.

5. FIND AND JOIN ENVIRONMENTAL JUSTICE GROUPS IN YOUR COMMUNITY TO LEARN HOW TO FIGHT BACK against the pollution that is causing asthma and cancer, among other diseases. Take a few minutes to **call local political leaders** and tell them that we **need clean air and clean water**. Use your voice to speak up – together we are very strong and loud!

See links on www.pcist.net for suggested environmental health organizations that you can join **to get connected and learn more**.